

Fueling the Future, Powering Progress



F A M U S B E N T A L A

INDONESIA

Company Profile

www.famusbentala.com

FamusBentalaIndonesia

About Us

PT Famus Bentala Indonesia ("FABI") formed in 2024, initiated by three people who have experience in the Oil and Gas industry and Mining business and bring total experience of more than 20 years. Based on their experience, they formed the company to contribute in building Indonesia's Oil and Gas industry and support the Country in increasing oil lifting.





Vision

To be the most trusted and innovative leader in the global oil and gas industry, driving progress and sustainability through cutting-edge technology and responsible practices. We envision a future where our operations contribute to a cleaner, more efficient energy sector, and fostering economic.



Mission

Our mission is to responsibly explore, develop, and deliver energy resources that power the world's progress. By aligning our efforts with these core principles, we strive to meet the evolving energy needs of today while paving the way for a brighter and more sustainable future.

What We Do

At Famus Bentala Indonesia, we provide comprehensive energy solutions that meet the evolving needs of the global market. Our diverse portfolio covers every aspect of the oil and gas industry, from exploration to delivery. Here's a closer look at our key operations:

Exploration and Production

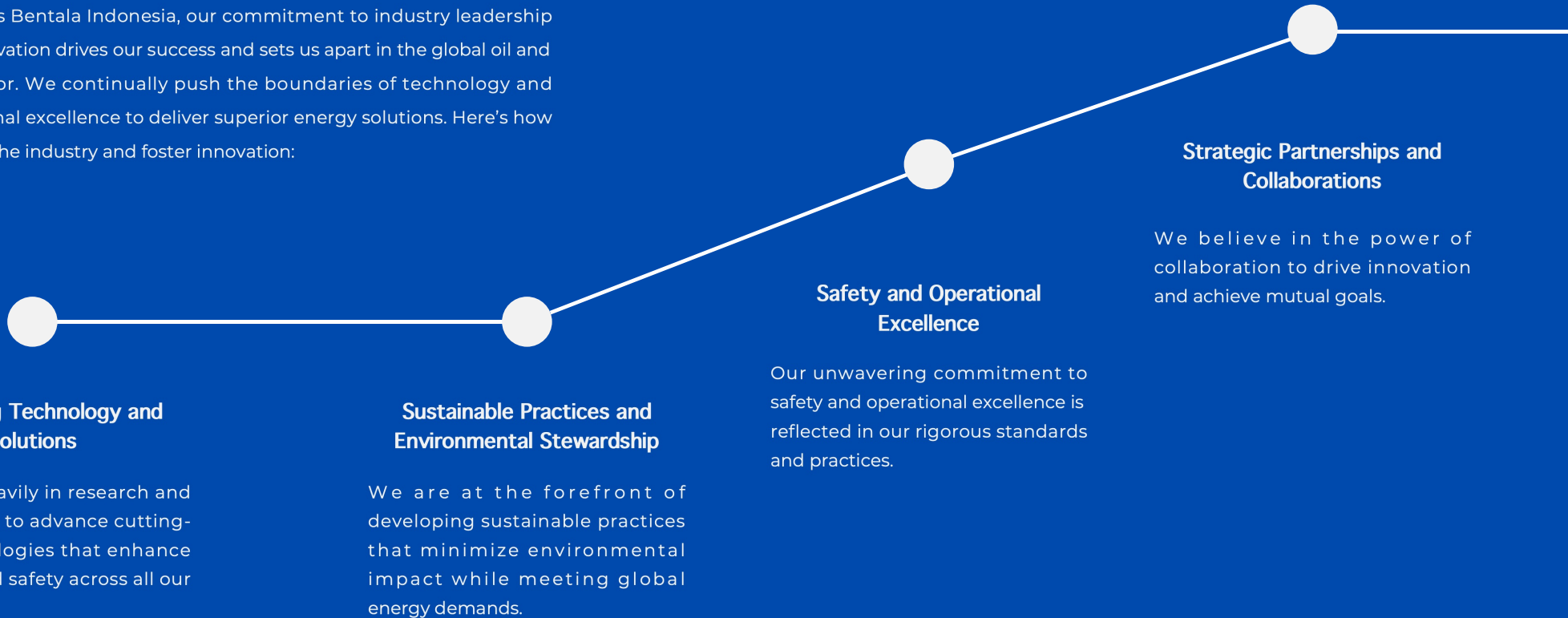
Idle wells

Technology and Innovation

Consulting

Innovation

At Famus Bentala Indonesia, our commitment to industry leadership and innovation drives our success and sets us apart in the global oil and gas sector. We continually push the boundaries of technology and operational excellence to deliver superior energy solutions. Here's how we lead the industry and foster innovation:



FamusBentalaIndonesia



**Thought Leadership and
Expertise**

Our team of experts and leaders are recognized for their deep industry knowledge and thought leadership.

**Global Presence and Market
Adaptability**

Our extensive global network and market presence enable us to adapt to changing industry dynamics and seize new opportunities.

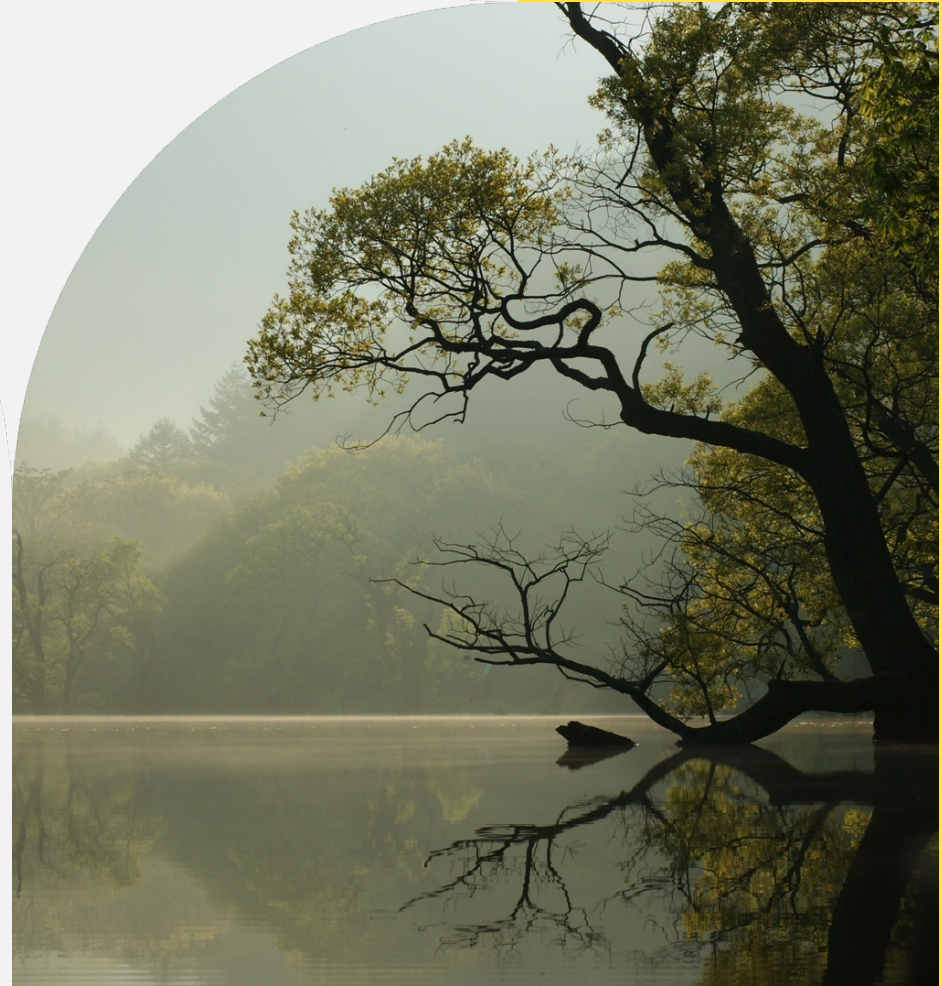
Solutions

At Famus Bentala Indonesia, we offer a comprehensive range of products and solutions designed to meet the diverse needs of the global energy market. Our offerings span across the entire oil and gas value chain, providing reliable, innovative, and efficient solutions to our customers.

FamusBentalaIndonesia

Health, Safety, and Environmental Commitment

At Famus Bentala Indonesia, dedication to Health, Safety, and the Environment (HSE) is not just a principle; it's a fundamental part of our business processes. We prioritize the safety of our employees, and everyone impacted by our operations. Our commitment is evident through our management plans, policies, and corporate values.



FamusBentalaIndonesia

Leadership Team



Fachri Sony

A seasoned entrepreneur in Oil and Gas industry. He has experience both in Exploration and Production activities in ConocoPhillips Indonesia, Bukit Energy and Jalagraha Antoro Migasindo. He also founder of Athari Jala Migasindo engaged in Idle Well operations in Sumatera, Indonesia.



Aulia Mahruzar

A seasoned professional in Oil and Gas industry. He bring experience in the industries as Business Support. He gain experience during his tenure in VICO Indonesia, Bukit Energy, Mandala Energy and also Pertamina (Persero).



Erwin Yahya

Experienced in business and digital transformation, with a track record of driving innovation and operational efficiency across leading industrial companies such as ConocoPhillips, Pupuk Indonesia, Trakindo Utama, Krakatau Steel, and Semen Gresik

FamusBentalaIndonesia

At Famus Bentala Indonesia, we are dedicated to driving excellence and innovation in the oil and gas industry. Our strategic vision, commitment to safety and sustainability, and strong financial performance underscore our role as a leading global energy provider. Through our key projects and extensive global presence, we are continuously advancing our capabilities and expanding our reach to meet the world's energy needs responsibly and efficiently.

Our focus on pioneering technology, operational efficiency, and community engagement reflects our dedication to creating long-term value for our stakeholders and contributing to a sustainable energy future. As we navigate the evolving energy landscape, we remain committed to upholding the highest standards of performance, safety, and environmental stewardship.

We invite you to connect with us to learn more about our projects, initiatives, and how we can collaborate to achieve shared success.

FamusBentalaIndonesia

Project Funding



PSC Sidoarjo and KSO Sukamandi/Sindangsari

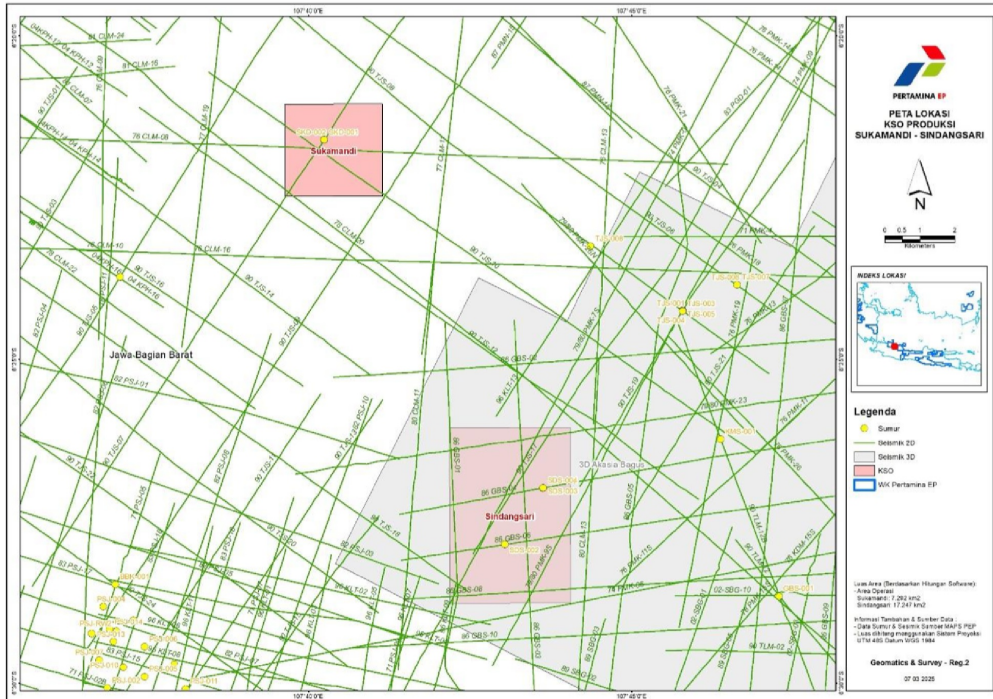
Famus objective is producing 7.500 bbl. equal to 10.000 barrels per day. To achieve these objectives, FABI requires funding with total USD 10 - 50 million that is primarily used for:

- Block Acquisition, under KSO (Production Block)
- Seismic
- Drilling Program
- Work Over
- Building Facilities
- Part of the funding also will allow FABI to see other opportunities particularly in join Operated block as Non-Operating party

Appendix 3. KSO Areas of Operation: Sukamandi-Sindangsari

**PARTNERSHIP OPPORTUNITIES
SUKAMANDI-SINDANGSARI
(West Java - Onshore)**

Stage : Exploitation
 Basin : West Java
 Acreage : 24.4 Km2
 Duration : until the end of PEP Contract in 2035



Production

Sukamandi:

- Oil 200-300 BOPD
- Gas 5 MMscfd

Sindangsari:

- Oil 100-200 BOPD
- Gas 5 MMscfd

Target Production

Sukamandi:

- Oil 500 BOPD
- Gas 10 MMscfd

Sindangsari:

- Oil 500 BOPD
- Gas 10 MMscfd

FOAMUS



Working area Sidoarjo Field currently 3.041 km , which is divided by 5 area, included 2 onshore dan 3 offshore.

- Area-1 : Covers Kabupaten Kediri, Nganjuk, dan Jombang
- Area-2 : Covers Kabupaten Sidoarjo, Pasuruan, Mojokerto, Jombang dan Kotamadya Pasuruan
- Area-3 : Covers Kabupaten Probolinggo
- Area-4 : Covers Kabupaten Probolinggo dan Situbondo
- Area-5 : Covers Kabupaten Situbondo

Current Production: Oil 500 BOPD and Gas 1.7 MMscfd

Target Production: Oil 3000-5000 BOPD and Gas 20 MMscfd

FAMUS

GROSS REVENUE

COMMODITY	GROSS REVENUE		PT M		PT L & PT F	
GAS	\$	237,250,000.00	\$	16,014,375.00	\$	90,748,125.00
OIL	\$	127,750,000.00	\$	5,748,750.00	\$	51,738,750.00
TOTAL	\$	365,000,000.00	\$	21,763,125.00	\$	142,486,875.00

OPERATIONAL COST

	Per YEAR		15 YEARS		EXPLORATION COST	
PT M	\$	2,176,312.50	\$	32,644,687.50	\$	-
PT L & PT F	\$	35,621,718.75	\$	534,325,781.25	\$	60,000,000.00
Total	\$	37,798,031.25	\$	566,970,468.75	\$	60,000,000.00

REVENUE

	PT M		PT L & PT F		TOTAL	
Gross Revenue	\$	326,446,875.00	\$	2,137,303,125.00	\$	2,463,750,000.00
Nett Revenue	\$	293,802,187.50	\$	1,602,977,343.75	\$	1,896,779,531.25

CONSOLIDATED KSO SUKAMANDI BLOCK				
ACQUIRES & DEVELOPMENT WORK PROGRAM				
NO	ACTIVITIES & OBJECTIVES		PROGRAM PLANNING	VALUE (\$ K USD)
1	SECURE CONTRACT 15 YEARS KSO SUKAMANDI BLOCK		ESTABLISH BUSINESSES LICENSEE FROM PT PEP TO PT FAMUS	US\$ 3,050
	A	T/F CAPABILITIES SELECTION	ENGINEERING, PRODUCTION & FINANCE MANAGEMENT	US\$ 750
	B	OCP	OPPORTUNITY CASH PROGRAM TO PT PEP ASSET 3	US\$ 550
	C	PB	PERFORMANCE BOND	US\$ 1,000
	D	AWARD	SIGNING CONTRACTUALS	US\$ 750
2	PRODUCTION FACILITY REACTIVATION		REACTIVATION PROGRAM TO 1ST OIL FROM KSO SUKAMANDI PT PEP WITH PT FAMUS	US\$ 7,100
	A	FEL-2	ENGINEERING DESIGN APPROVAL	US\$ 350
	B	FEED	FINAL ENGINEERING DESIGN	US\$ 1,750
	C	EXECUTION	ENGINEERING, PROCUREMENT & CONSTRUCTIONS	US\$ 3,500
	D	START UP	PROJECT TO OPERATION HANDOVER	US\$ 1,500
3	FACILITY IMPROVEMENT & REFURBISHMENT		IMPROVEMENT PRODUCTION FACILITY PROGRAM	US\$ 10,250
	A	CONDENSATE PLANT EXPANSION	REFURBISH CONDENSATE FACILITY TO OPTIMUM CAPACITY	US\$ 3,250
	B	LNG LAND STORAGE	LAND ACQUISITION AND EPC SCOPES	US\$ 3,500
	C	PIPELINE INSTALLATION	NATURAL GAS ONLINE EXPORT LINES	US\$ 3,500

next...

		EXPLORATION & DEVELOPMENT	KSO DEVELOPMENT COMMITMENT DELIVERABLES	US\$ 29,000
4	A	EXPLORES THE NORTHERN AREAS FOR NATURAL GAS & CONDENSATES	SUBSURFACE DEVELOPMENT PROGRAM & DRILL 4 EXPLORATION WELL NORTHERN AREAS	US\$ 5,000
	B	EXPLORES THE SOUTHERN AREAS FOR OIL TRACES	SUBSURFACE DEVELOPMENT PROGRAM & DRILL 4 EXPLORATION WELL SOUTHERN AREAS	US\$ 5,500
	C	GAS WELL DEVELOPMENT	1 GAS WELL DRILLING PROGRAM	US\$ 6,500
	D	OIL WELL DEVELOPMENT	1 OIL WELL DRILLING PROGRAM	US\$ 12,000
		OPERATION & MAINTENANCE	OPERATION & MAINTENANCE DAILY PROGRAM	US\$ 4,850
5	A	OIL PLANT	NORMAL OPERATION OIL & GAS PROCESSING PLANT	US\$ 550
	B	GAS PLANT	NORMAL OPERATION OIL & GAS PROCESSING PLANT	US\$ 250
	C	PRODUCED WATER PLANT	NORMAL OPERATION OIL & GAS PROCESSING PLANT	US\$ 150
	D	CONDENSATE PLANT	NORMAL OPERATION OIL & GAS PROCESSING PLANT	US\$ 150
	E	OIL STORAGE SYSTEM	NORMAL OPERATION OIL & GAS PROCESSING PLANT	US\$ 200
	F	LNG STORAGE SYSTEM	NORMAL OPERATION OIL & GAS PROCESSING PLANT	US\$ 300
	G	PIPELINED OPERATION	NORMAL OPERATION OIL & GAS PROCESSING PLANT	US\$ 150
	H	GAS SALES SYSTEM	NORMAL OPERATION OIL & GAS PROCESSING PLANT	US\$ 150
	I	OIL SALES SYSTEM	NORMAL OPERATION OIL & GAS PROCESSING PLANT	US\$ 150
	J	CONDENSATE SALES SYSTEM	NORMAL OPERATION OIL & GAS PROCESSING PLANT	US\$ 150
	K	REGASIFICATION & DISTRIBUTION SYSTEM	NORMAL OPERATION OIL & GAS PROCESSING PLANT	US\$ 350
	L	TRUCKING MANAGEMENT	NORMAL OPERATION OIL & GAS PROCESSING PLANT	US\$ 550
	M	WELL SERVICES MANAGEMENT	NORMAL OPERATION OIL & GAS PROCESSING PLANT	US\$ 1,000
	N	SUBSURFACE & EXPLORATION	NORMAL OPERATION OIL & GAS PROCESSING PLANT	US\$ 750

next...

PROJECT FUNDING SCHEDULE			
NO	ACTIVITIES & OBJECTIVES	PROGRAM PLANNING	VALUE (\$ K USD)
1	SECURE CONTRACT 15 YEARS KSO SUKAMANDI BLOCK	ESTABLISH BUSINESSES LICENSEE FROM PT PEP TO PT FAMUS, 66 DAYS CONTRACT SECURING	US\$ 3,050
2	PRODUCTION FACILITY REACTIVATION	REACTIVATION PROGRAM TO 1ST OIL FROM KSO SUKAMANDI PT PEP WITH PT FAMUS, 257 DAYS PROJECT DURATION	US\$ 7,100
3	FACILITY IMPROVEMENT & REFURBISHMENT	IMPROVEMENT PRODUCTION FACILITY PROGRAM, 729 DAYS PROJECT DURATION	US\$ 10,250
4	EXPLORATION & DEVELOPMENT	KSO DEVELOPMENT COMMITMENT DELIVERABLES, 942 DAYS EXPLORATION & DEVELOPMENT UPSIDE POTENTIALS	US\$ 29,000
5	OPERATION & MAINTENANCE	OPERATION & MAINTENANCE DAILY PROGRAM, 1491 DAYS OPERATION & MAINTENANCE ACTIVITIES	US\$ 4,850
6	TOTAL		US\$ 54,250
		PHASE #1	US\$ 15,000
		PHASE #2	US\$ 10,250
		PHASE #3	US\$ 29,000
		TOTAL PHASE	US\$ 54,250

ROI

Item	Value
Daily Production	7,000 barrels/day
Days per Year	365
Annual Production	2,555,000 barrels
Investor Capital	\$50,000,000
Total Project Capital	\$270,558,525
Ownership Share	≈ 18.48%

Revenue and Profits under 3 oil prices and 3 net margin scenarios

Oil Price	Annual Revenue	@30%	@35%
\$75	\$191,625,000	\$57,487,500	\$67,068,750
\$85	\$217,175,000	\$65,152,500	\$76,011,250

Investor's Profit & BEP

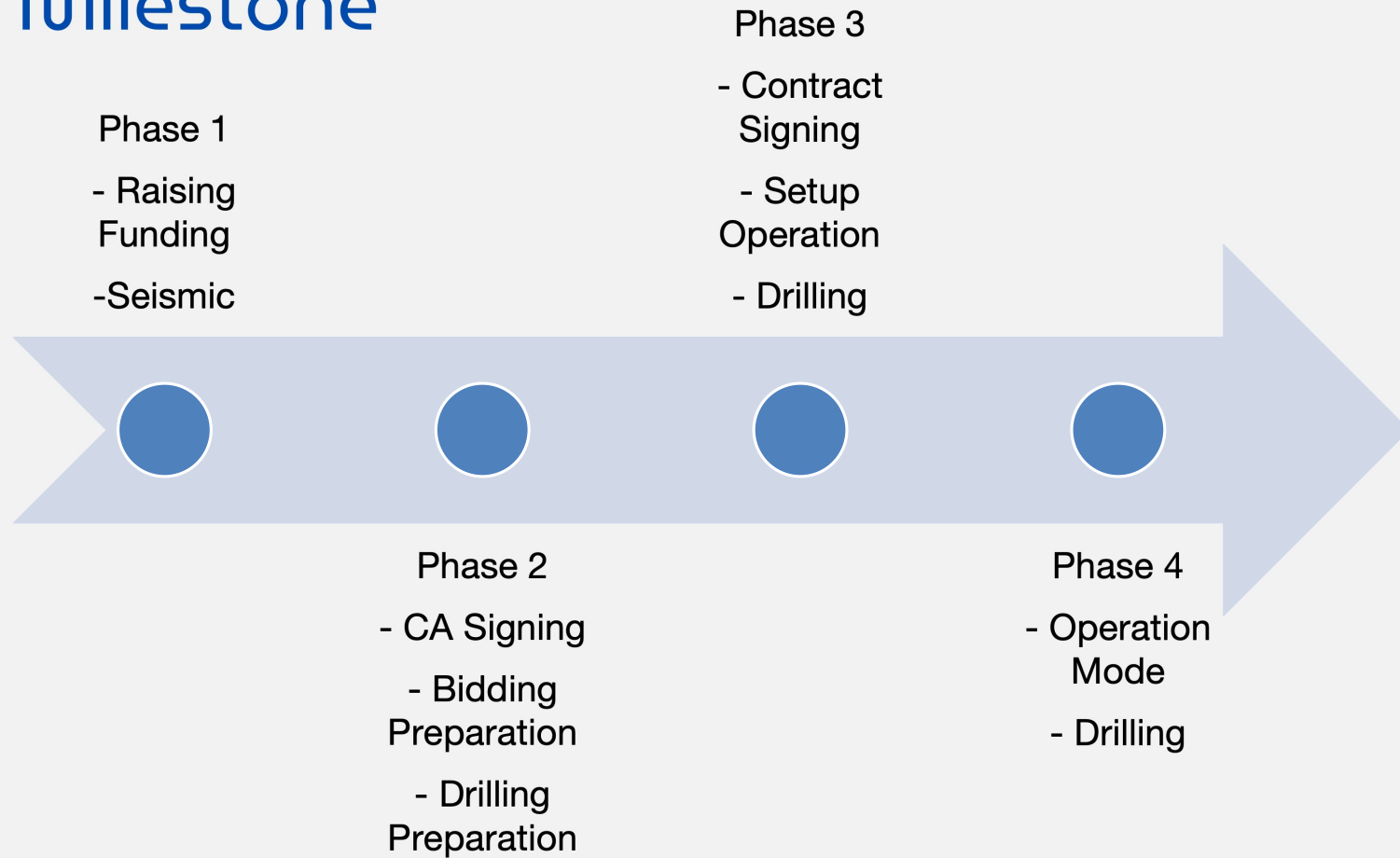
Oil Price	Net Margin	Investor Profit (USD)	BEP (Years)
\$75	30%	\$10,628,936	4.7
\$75	35%	\$12,400,425	4.0
\$85	30%	\$12,050,538	4.1
\$85	35%	\$14,058,961	3.6

Summary

| Best Case | Oil at \$85, 35% Margin → BEP = 3.6 years |
| Worst Case | Oil at \$75, 30% Margin → BEP = 4.7 years |

IRR : 27% (Very Profitable)

Project Milestone



FamusBentalaIndonesia

Contact Us

Famus Bentala Indonesia

 Alamanda Tower Tb Simatupang No 23-24

 +62 21 22760303

 Fabi-indo@outlook.co.id

 www.famusbentala.com



We look forward to engaging
and exploring opportunities for
collaboration.